

## Aseptic fittings for Orbital welding DIN 11865

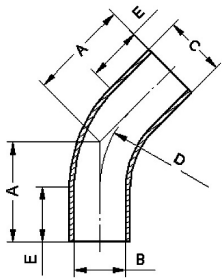
Art.No

EUR

Art.No

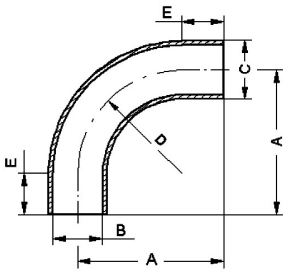
EUR

### Bend 45° ISO, H2



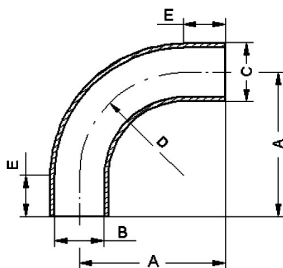
DN	A	B	C	D	E			AISI316L-1.4435
139,7	133,9	134,5	139,7	190,5	55			474741 Enquiry
168,3	149,7	163,1	168,3	228,5	55			474742 Enquiry
219,1	206,3	213,9	219,1	305	80			474744 Enquiry

### Bend 90° DIN, H2



DN	A	B	C	D	E			AISI316L-1.4435
6	45	6	8	20	25			474428 Enquiry
8	50	8	10	25	25			474429 Enquiry
10	51	10	13	26	25			474430 Enquiry
15	60	16	19	35	25			474431 Enquiry
20	65	20	23	40	25			474432 Enquiry
25	90	26	29	50	40			474433 Enquiry
32	95	32	35	55	40			474434 Enquiry
40	100	38	41	60	40			474435 Enquiry
50	110	50	53	70	40			474436 Enquiry
65	120	66	70	80	40			474437 Enquiry
80	145	81	85	90	55			474438 Enquiry
100	155	100	104	100	55			474439 Enquiry
125	270	125	129	187,5	82,5			474441 Enquiry
150	325	150	154	225	100			474442 Enquiry
200	400	200	204	300	100			474444 Enquiry

### Bend 90° ASME, H2



DN	A	B	C	D	E			AISI316L-1.4435
1/4"	66,7	4,57	6,35	14,3	52,4			483898 Enquiry
3/8"	66,7	7,75	9,53	28,6	38,1			483899 Enquiry
1/2"	76,2	9,4	12,7	28,6	47,6			483801 Enquiry
3/4"	76,2	15,75	19,05	28,6	47,6			483802 Enquiry
1"	76,2	22,1	25,4	38,1	38,1			483803 Enquiry
1,5"	95,3	34,8	38,1	57,2	38,1			483804 Enquiry
2"	120,7	47,5	50,8	76,2	44,5			483805 Enquiry
2,5"	139,7	60,2	63,5	95,3	44,5			483806 Enquiry
3"	158,8	72,9	76,2	114,3	44,5			483807 Enquiry
4"	203,2	97,38	101,6	152,4	50,8			483808 Enquiry
6"	292,1	146,86	152,4	228,6	63,5			483811 Enquiry

**LINNEMANN**  
Rohrverbindungen • Edelstahlarmaturen  
Pipe connections • Stainless steel fittings

LINNEMANN GmbH • Heerweg 14-16  
72070 Tübingen / Germany

Fon: +49 (0) 7071 97555-0  
Fax: +49 (0) 7071 97555-10

E-Mail: info@linneemann-online.com  
Internet: www.linneemann-online.com